

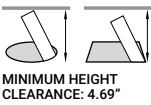
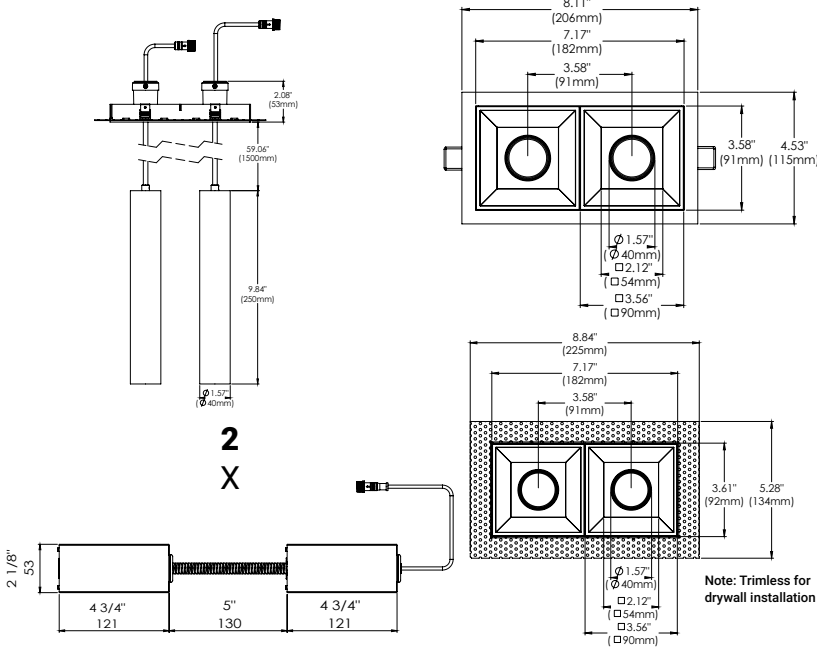


FEATURES

The Bravo collection features a sharp sleek design, no matter the type of fixture you choose within this collection. Whether you choose both Bravo ceiling mount luminaries and Bravo recessed mount fixtures, there will be a harmonious integration throughout the room. Bravo Recessed mount fixtures are available in 3 body sizes and can be outfitted with 7 different modules that can be used for various applications and installations.

SPECIFICATIONS

FIXTURE BODY	18 gauge powder coated steel body. Aluminum powder coated trim or trimless mesh plate
INSTALLATION TYPE	Remodel/existing ceiling N/C plate, IC Box on page 2
CUT HOLE	Trim: 7 5/8" x 4 1/8" Trimless: 7 5/8" x 4 1/8"
COLOR FINISH	Black/White/Custom
LIGHT MODULE	High output, high efficiency LED COB Lumen Maintenance: 70%@50,000 hrs
INPUT VOLTAGE	120V - 277V
WATTAGE	30W IC Rated
POWER SUPPLY	2 x ERP 15W, Constant Current 350mA power supply Minimum operating temperature: -30° Enclosed in a Junction box with 12" flexible cable to mate to module connector
CRI	90+
DIMMING	TRIAC/ELV/0-10V
DELIVERED LUMENS	2 x 15W, 1660 Lumens
CCT OPTIONS	3000K/4000K
APPROVAL	Damp
ELECTRICAL APPROVAL	Compliant
WARRANTY	



MAX CEILING TRIM THICKNESS: 1.25"
TRIMLESS THICKNESS: 1.5"

SPECIFICATION GUIDE

BRAVO	RECESSED	2-LIGHT	TRIM/ TRIMLESS	FINISH	LIGHT MODULE x 2	WATTAGE	CCT	ADD-ONS**					
BVO	R	2	T	TRIM	01	BLACK	SUSU	SUSPENSION	15	15W	30	EM	EMERGENCY MICRO INVERTER
			TL	TRIMLESS	02	WHITE					40		** Sold Separate, see page 2 for details.

ORDERING GUIDE EXAMPLE:
Bravo / Recessed Mount / 2-Light / Trim / White / Suspension / Suspension / 15W / 3000K
CODE: BVO-R-2-T-02-SUSU-15-30
For custom module configuration, email sales@eurofase.com

ADD-ONS (Sold Separate)



SINUSOIDAL EMERGENCY MICRO INVERTER
47184-015

- Remote Mounted
- 150W Max 0-10V
- 25W Max Triac/elv.
- Can accommodate multiple fixtures
- Recommended to load to 80%
- 90 Min Service
- See Spc Sheet for more details

NEW CONSTRUCTION PLATES + IC BOXES

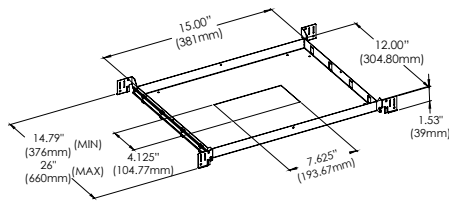


NEW CONSTRUCTION PLATE TRIM & TRIMLESS

44361-013

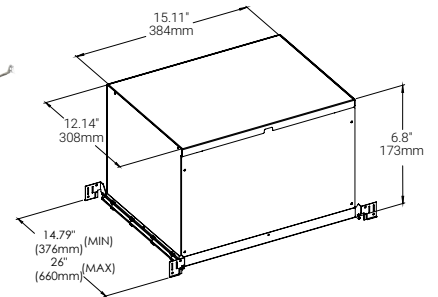
CUT HOLE:

Trim & Trimless:
7 5/8" x 4 1/8"



AT/ IC BOX
46744-012

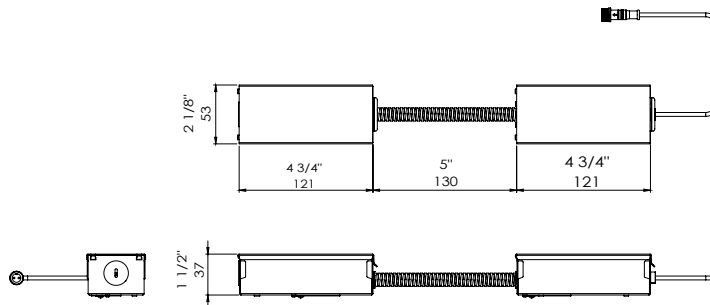
CUT HOLE:
Trim & Trimless:
7 5/8" x 4 1/8"



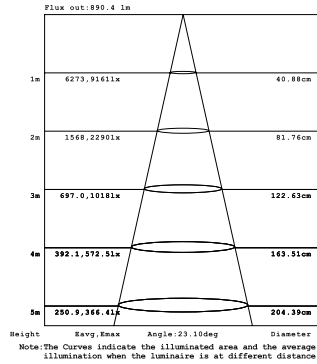
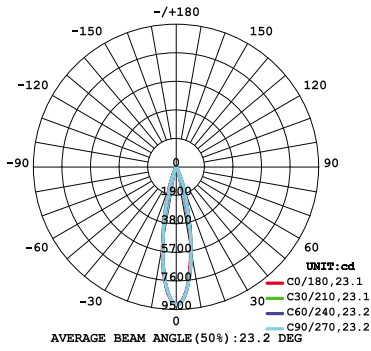
DRIVERS

- Compatible with TRIAC (forward-phase or leading-edge) ELV (reverse-phase or trailing edge) and 0-10V dimmers.
- ESSxxxW models: TRIAC and ELV dimming only at 120 Vac
- ESSxxxW models: ELV dimming only at 230 Vac
- 90° C maximum case hot spot temperature
- Class 2 power supply
- Lifetime: 50,000 hours at 70° case hot spot temperature (some models have a higher lifetime)
- IP64-rated (IP66 for ESST) case with silicone-based potting
- Protections: Output open load, over-current and short-circuit (hiccup), and over-temperature with auto recovery.
- Conducted and radiated EMI: Compliant with FCC CFR Title 47 Part 15 Class B (120 Vac) and Class A (277 Vac), and EN55015 (CISPR 15) at 220, 230, and 240 Vac.
- Complies with ENERGY STAR®, DLC (DesignLight Consortium®) and CA Title 24 technical requirements
- Worldwide safety approvals

2 X

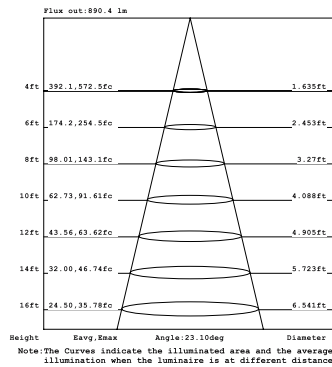
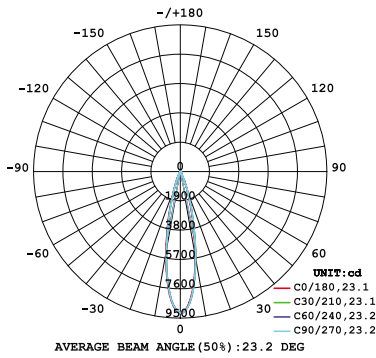


(Metric)



15W-2-LIGHT SUSPENSION

(Imperial)



15W-2-LIGHT SUSPENSION