

FM-60211

Project: \_\_\_\_\_

Location: \_\_\_\_\_

Fixture Type: \_\_\_\_\_

Catalog Number: \_\_\_\_\_

**AVAILABLE FINISHES:**



# Catalonia

FM-60211

**PRODUCT DESCRIPTION**

First class quality alabaster from Spain creates a work of art with die cast aluminum accents. This earthy element transforms your home into an artistic space with unique character that celebrates beauty and harmony. Available in aged brass and antique nickel finishes.

**FEATURES**

- Driver concealed within the canopy
- Ambient illumination
- First class quality Spanish alabaster
- Natural alabaster with unique veining in each crafted piece

**SPECIFICATIONS**

|                     |  |
|---------------------|--|
| <b>Rated Life</b>   | 50000 Hours  |
| <b>Standards</b>    | ETL, cETL, Damp Location Listed, Title 24 JA8: 2019 Compliant                |
| <b>Input</b>        | 120-277V, 50/60Hz  |
| <b>Dimming</b>      | ELV, 0-10V, TRIAC  |
| <b>CRI</b>          | 90   |
| <b>Mounting</b>     | Can be mounted on ceiling or wall in all orientations                        |
| <b>Color Temp</b>   | 3000K  |
| <b>Construction</b> | Aluminum spun frame with die cast brackets, alabaster shade, and PC diffuser |

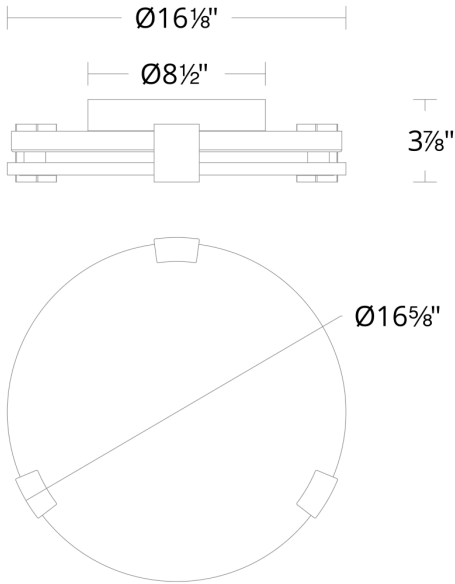
**REPLACEMENT PARTS**

RPL-GLA-60211 - Alabaster

| Model & Size | Color Temp | Finish            | LED Watts | LED Lumens | Delivered Lumens |
|--------------|------------|-------------------|-----------|------------|------------------|
| FM-60211 11" | 3000K      | AB Aged Brass     | 26.9W     | 1802       | 1075             |
|              | 3000K      | AN Antique Nickel | 26.9W     | 1802       | 1075             |

Example: **FM-60211-AN**

For custom requests please contact [customs@modernforms.com](mailto:customs@modernforms.com)



FM-60217

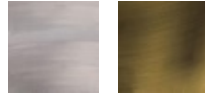
Project:

Location:

Fixture Type:

Catalog Number:

**AVAILABLE FINISHES:**



# Catalonia

FM-60217

**PRODUCT DESCRIPTION**

First class quality alabaster from Spain creates a work of art with die cast aluminum accents. This earthy element transforms your home into an artistic space with unique character that celebrates beauty and harmony. Available in aged brass and antique nickel finishes.

**FEATURES**

- Driver concealed within the canopy
- Ambient illumination
- First class quality Spanish alabaster
- Natural alabaster with unique veining in each crafted piece

**SPECIFICATIONS**

|                     |  |
|---------------------|--|
| <b>Rated Life</b>   | 50000 Hours  |
| <b>Standards</b>    | ETL, cETL, Damp Location Listed, Title 24 JA8: 2019 Compliant                |
| <b>Input</b>        | 120-277V, 50/60Hz  |
| <b>Dimming</b>      | ELV, 0-10V, TRIAC  |
| <b>CRI</b>          | 90   |
| <b>Mounting</b>     | Can be mounted on ceiling or wall in all orientations                        |
| <b>Color Temp</b>   | 3000K  |
| <b>Construction</b> | Aluminum spun frame with die cast brackets, alabaster shade, and PC diffuser |

**REPLACEMENT PARTS**

RPL-GLA-60217 - Alabaster

| Model & Size | Color Temp | Finish            | LED Watts | LED Lumens | Delivered Lumens |
|--------------|------------|-------------------|-----------|------------|------------------|
| FM-60217 17" | 3000K      | AB Aged Brass     | 37W       | 2647       | 1627             |
|              | 3000K      | AN Antique Nickel | 37W       | 2647       | 1627             |

Example: **FM-60217-AN**

For custom requests please contact [customs@modernforms.com](mailto:customs@modernforms.com)